



# VALVE SERVICES

PTW Energy Services performs inspection, repairs and testing of all valves and controls (PRV's, ball, gate, globe valves etc.) to ensure the protection of our clients' personnel and the safe reliable operation of their equipment. We offer 24/7/365 service to reduce costly downtime while strictly adhering to all applicable codes and regulations. PTW's talented team delivers unparalleled safety, quality and reliability to ensure we exceed our clients' expectations every time.

## FEATURES

- Our highly skilled and dedicated workforce is committed to maintaining an incomparable level of quality and client satisfaction
- Safety is of utmost importance at PTW — all employees possess extensive Health, Safety and Environmental training and knowledge
- Our Quality Management System, test equipment, repair and inspection areas are audited and approved by ABSA to service/set valves (ASME Sect. I, IV & VIII)
- Valves are pressure tested using digital gauges to achieve the most accurate results mitigating human error during reading and capturing high/low values
- Vendor neutral integrator of valves committed to supplying high quality products that meet our clients' exact specifications
- Every valve is inspected, repaired and tested to its respective Manufacturer's Specifications
- Repairs are made utilizing O.E.M parts, ensuring a safe, reliable product

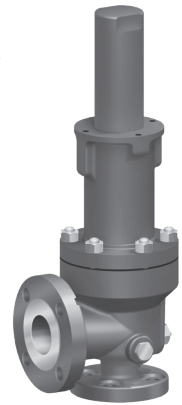




# VALVE SERVICES

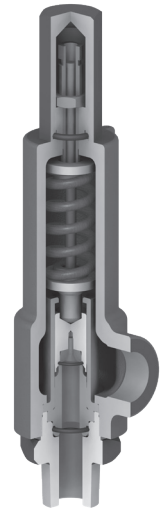
## VALUE-ADDED BENEFITS

- All PRV repair scopes are led by experienced PTW Valve Technicians who have successfully completed the advanced training per ABSA AB-524 appendix C
- Our first-class workmanship ensures the highest quality, service delivery and client specifications are met
- Storage and inventory maintenance of spare parts and valves
- Digital test and inspection reports include:
  - As found, disposition and final results of each valve serviced
  - O.E.M./Critical dimensions
  - Part numbers of replaced and suggested replacement parts
  - Detailed comments and notes
- All technicians receive extensive training in shop and many have successfully completed Manufacturer Training for multiple valve brands/styles



## APPLICATIONS/SERVICES

- Shop repair for all types of valves and devices
  - Pilot, conventional or automated
  - Air, liquid, & steam valve testing
- Repair and testing for API/ANSI, control valves, actuators
- Preventative maintenance guidance
  - Mitigates environmental incidents
  - Lowers maintenance costs
  - Prolongs the life of valves and equipment — more efficient operation
- Test only (verify set pressure and leakage): Certification of set pressure
- Service: Pretest, disassembly, cleaning, inspection, repair, reassembly and testing
- Conversions: Change media, set pressure / capacity, type, trim
- Outage planning & execution of valve services, troubleshooting & more.



## Training

- Farris Valves
- Consolidated Section I and VIII PRVs
- Crosby Section I and VIII PRVs
- Anderson Greenwood Pilots
- ASME Assembler & NB-VR Training
- Knife Gate repair
- Control & API/ANSI valves
- Actuation